



The #1 Choice for Print Engines



Lt408 - Entry-Level OEM Print Engines

The print engine, when integrated with an applicator system, provides low-throughput, light-duty applications with an automated, yet affordable, print/apply labeling solution to replace labor intensive hand labeling or expensive pre-printed carton inventory.



LT408

PRINTING SPEED	2, 3, 4, 5, 6"/s (50, 75, 100, 125, 150 mm/s)
PRINT RESOLUTION	203 dpi (8 dpmm)
PROCESSOR	32-Bit RISC
MAX PRINT AREA	4.09" W x 49.2" L (104 mm x 1249 mm)
DIMENSIONS	13" (W) x 10.7" (D) x 10.6" (H)
WEIGHT	21.4 lbs.

SATO OEM Print Engines

SATO OEM print engines are designed specifically for integration into automatic print/apply systems. The components of these high duty-cycle engines are selected for reliable performance over extended periods of time. SATO print engines are available through OEM manufacturers of print/apply systems.



M8485Se

PRINTING SPEED	4, 6, 8, 10, 12"/s (100, 150, 200, 250, 300 mm/s)
PRINT RESOLUTION	203 dpi (8 dpmm)
PROCESSOR	32-Bit RISC
MAX PRINT AREA	5" W x 49" L (128 mm x 1249 mm)
DIMENSIONS	10.4" (W) x 16.4" (D) x 11.9" (H)
WEIGHT	25.3 lbs.

M8459Se

PRINTING SPEED	2, 3, 4, 5"/s (50, 75, 100, 125 mm/s)
PRINT RESOLUTION	203 dpi (8 dpmm)
PROCESSOR	32-Bit RISC
MAX PRINT AREA	4.4" W x 49" L (112 mm x 1249 mm)
DIMENSIONS	10.4" (W) x 16.4" (D) x 11.9" (H)
WEIGHT	25.3 lbs.

M8460Se

PRINTING SPEED	4, 6, 8"/s (100, 150, 200 mm/s)
PRINT RESOLUTION	203 dpi (8 dpmm)
PROCESSOR	32-Bit RISC
MAX PRINT AREA	6" W x 49" L (152 mm x 1249 mm)
DIMENSIONS	10.4" (W) x 17.9" (D) x 11.9" (H)
WEIGHT	27.6 lbs.

M8490Se

PRINTING SPEED	4, 6, 8"/s (100, 150, 200 mm/s)
PRINT RESOLUTION	305 dpi (12 dpmm)
PROCESSOR	32-Bit RISC
MAX PRINT AREA	4.4" W x 32.8" L (112 mm x 833 mm)
DIMENSIONS	10.4" (W) x 16.4" (D) x 11.9" (H)
WEIGHT	25.3 lbs.

CL408e RFID/412e RFID

The ideal solution for EPC compliance, tracking, security, and internal closed-loop RFID applications. In a one-step process the CLe RFID printers write, verify and print smart labels and tags with embedded RFID transponders. Transponders include integrated circuitry with an antenna and are designed to be programmed using radio waves.



CL408e/412e

PRINTING SPEED	2" - 6"/s (50 - 150 mm/s) 203 dpi on CL408e (8 dpmm) 305 dpi on CL412e (12 dpmm)
PRINT RESOLUTION	
PROCESSOR	32-Bit RISC
MAX PRINT AREA	203 dpi - 4.1" W x 49.2" L (104 mm x 1249 mm) 305 dpi - 4.1" W x 32.8" L (104 mm x 835 mm)
DIMENSIONS	10.7" (W) x 16.9" (D) x 12.6" (H)
WEIGHT	28.7 lbs.
RFID SUPPORTED	UHF (EPC, ISO)

M8485Se RFID

RFID tags are written, read and verified inside the printer prior to printing. In the case of a tag failure, the OEM RFID printers will mark the tag, send a "bad tag" output and advance to the next one, assuring reliability in mission critical applications.



M8485Se

PRINTING SPEED	4, 6, 8, 10, 12"/s (100, 150, 200, 250, 300 mm/s)
PRINT RESOLUTION	203dpi (8 dpmm)
PROCESSOR	32-Bit RISC
MAX PRINT AREA	5" W x 49" L (128 mm x 1249 mm)
DIMENSIONS	10.4" (W) x 16.4" (D) x 11.9" (H)
WEIGHT	25.3 lbs.
RFID SUPPORTED	HF (ISO, Tag-It™) UHF (EPC, ISO)

RFID Thermal Labels

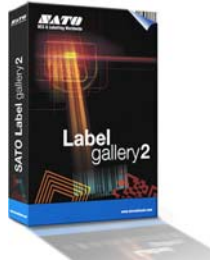
Techno THERM® RFID labels are designed and manufactured with the highest quality label materials and RFID antennas to ensure optimum performance. SATO RFID labels are available with either HF or UHF inlays. Our RFID labels are specifically designed to complement the features of the SATO RFID printer/encoders.



Software & Supplies

LABEL GALLERY 2 - Label Design Software

LABEL GALLERY 2 is a unique label design and production suite of software based on an easy-to-use and intuitive user interface designed specifically for SATO Printers. LABEL GALLERY 2 offers a family of professional labeling software products including a multi-lingual user interface and complete barcode printing solutions for desktop and enterprise users.



NEW NATIVE RFID SUPPORT!

EASY VERSION - Entry-Level

- Entry-level labeling software
- Unicode label design
- Wizard-based basic barcode labeling
- Advanced & compliance label design
- RFID support (HF & UHF/EPC)
- Complete database support
- Programming integration option
- ActiveX programming interface
- Downloading to memory
- VB scripting

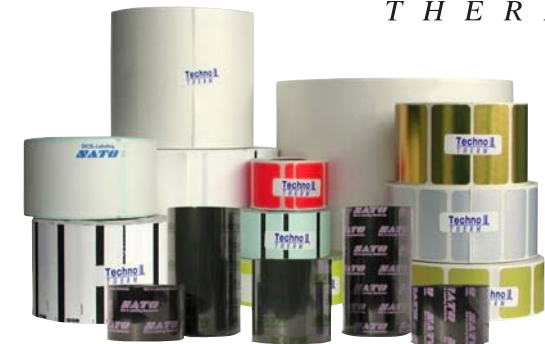
TRUE PRO VERSION - Advanced and Customizable

- Advanced & compliance label design
- RFID support (HF & UHF/EPC)
- Middleware integration module
- Creating standalone label applications
- Non-Windows & stand-alone printing
- Mobile wireless printing (WinCE support)



LABELS AND RIBBON

SATO Supplies are produced with the highest quality materials to ensure optimum print performance and long life for the printhead. They are specifically manufactured to complement the features of SATO printers, but will work equally well on other thermal printers.



Option Name/ Printer Model	MB Series	HT200e	CT400/ CT410	M5900RVe	M84Pro	CX400	GTe Series	CL408e/ CL412e	CL608e/ CL612e	M10e	XL400e/ XL410e
Battery/Battery Pack	S	O	O	O	O	O	O	O	O		
Dispenser			O	O	O	O	O	O	O	O	S
Internal Rewinder			O	O	O	O	O	O	O	O	O
Cutter			O	O	O	O	O	O	O	O	O
External Rewinder				O	O	O	O	O	O	O	O
Stacker				O	O	O	O	O	O	O	O
RS232 Serial	S	S	O	S*	S*	S	S*	S*	S*	S*	S
IEEE1284 Parallel			O	S*	S*	S	S*	S*	S*	S*	O
USB			O	O	O	O	O	O	O	O	O
10/100 Base T Ethernet			O	O	O	O	O	O	O	O	O
802.11b Wireless	O		O	O	O	O	O	O	O	O	O
Bluetooth	O		O	O	O	O	O	O	O	O	O
Real Time Clock		S		O	O	O	O	O	O	O	O
PC Card PCB Assembly				O	O		O	O	O	O	O
IC Card (Flash) 4MB				O	O	O	O	O	O	O	O
IC Card (SRAM) 2MB/256KB				O	O	O	O	O	O	O	O
Linerless	O	O	O	O	O	O	O	O	O	O	O
RFID (HF, UHF)							O	O			

S - Standard O - Optional S* - Standard choices are Parallel, Serial

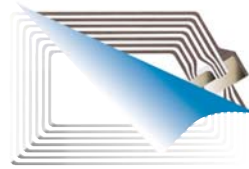


www.satolabeling.com

SATO
DCS & Labeling Worldwide

*The Global Leader
in AIDC Solutions*

DCS & Labeling Worldwide
SATO Labeling Solutions America, Inc.
1140 Wincham Parkway
Romeoville, IL 60446





Corporate Profile

SATO is a pioneer in the Automatic Identification and Data Collection (AIDC) industry and the inventor of the world's first electronic thermal transfer barcode printer. It revolutionized the barcoding industry by introducing the Data Collection System (DCS) & Labeling concept – a total barcode and labeling solution providing high quality barcode printers, scanners/hand-held terminals, label design software and consumables.

SATO is one of the first in the industry to introduce a complete, multi-protocol EPC-compliant, UHF RFID solution.

Today, SATO continues its tradition of designing and manufacturing high quality industrial printers that deliver reliable performance with each print job.



M84Pro

- User configurable 203, 305, or 609 dpi print resolution
- RISC CPU for outstanding performance
- High print speed
- High print quality and print resolution
- Heavy-duty metal industrial construction
- Wide range of interface connectivity options using I/F Plug-In Modules
- Proven rugged reliable design
- 18 MB of on-board memory
- Print from any Windows® application

M84Pro	PRINTING SPEED	203 dpi - up to 10"/s 305 dpi - up to 8"/s 609 dpi - up to 6"/s
	PRINT RESOLUTION	203/305/609 dpi (8/12/24 dpmm)
	PROCESSOR	32-Bit RISC
	MAX PRINT AREA	203 dpi - 4.1" W x 49.2" L (104 mm x 1249 mm) 305 dpi - 4.1" W x 32.8" L (104 mm x 835 mm) 609 dpi - 4.1" W x 14" L (104 mm x 356 mm)
	DIMENSIONS	10.4" (W) x 17.1" (D) x 13.2" (H)
	WEIGHT	40.9 lbs.



CLe Series

- Industry leading throughput
- High-speed interface
- Proven rugged design
- Options and features rich
- Wide range of interface connectivity options using I/F Plug-In Modules
- 18 MB of on-board memory
- Print from any Windows® application

CL408e/412e	PRINTING SPEED	up to 6"/s (150 mm/s)
	PRINT RESOLUTION	203 dpi on CL408e (8 dpmm) 305 dpi on CL412e (12 dpmm)
	PROCESSOR	32-Bit RISC
	MAX PRINT AREA	203 dpi - 4.1" W x 49.2" L (104 mm x 1249 mm) 305 dpi - 4.1" W x 32.8" L (104 mm x 835 mm)
	DIMENSIONS	10.7" (W) x 16.9" (D) x 12.6" (H)
CL608e/612e	WEIGHT	28.7 lbs.
	PRINTING SPEED	up to 8"/s (200 mm/s)
	PRINT RESOLUTION	203 dpi on CL608e (8 dpmm) 305 dpi on CL612e (12 dpmm)
	PROCESSOR	32-Bit RISC
	MAX PRINT AREA	6" W x 49.2" L (152 mm x 1249 mm) on CL608e 6.5" W x 32.8" L (165 mm x 835 mm) on CL612e
DIMENSIONS	13.8" (W) x 16.9" (D) x 11.7" (H)	
WEIGHT	41.9 lbs.	

M10e

- Large format industrial printer
- Industry leading throughput
- High-speed interface
- Up to 11.8" wide
- Wrinkle-free media handling
- Options and features rich
- Wide range of interface connectivity options using I/F Plug-In Modules



M10e	PRINTING SPEED	3" - 5"/s (75 - 125 mm/s)
	PRINT RESOLUTION	305 dpi (12 dpmm)
	PROCESSOR	32-Bit RISC
	MAX PRINT AREA	10.51" W x 16.54" L (266.7 mm x 420 mm)
	DIMENSIONS	18.7" W x 12.3" D x 12.5" H on M10eTT 18.7" W x 12.3" D x 10.9" H on M10eDT
WEIGHT	46.7 lbs. (M10e TT); 44.5 lbs. (M10e DT)	

GTe Series

The GTe Series is the recognized standard for rugged industrial high performance printers with high resolution capabilities. The GTe offers user configurable print resolutions of 203, 305, and 609 dpi. The GTe's powerful electronics provide high throughput and print speeds of up to 12 ips.

RFID UPGRADABLE!



PRINTING SPEED	203 dpi - up to 12"/s 305 dpi - up to 12"/s 609 dpi - up to 6"/s
PRINT RESOLUTION	203/305/609 dpi (8/12/24dpm)
PROCESSOR	32-Bit RISC
MAX PRINT AREA	203 dpi - 4.1" W x 98.43" L (104 mm x 2500 mm) 305 dpi - 4.1" W x 59.06" L (104 mm x 1500 mm) 609 dpi - 4.1" W x 15.75" L (104 mm x 400 mm)
DIMENSIONS	10.67" (W) x 17.91" (D) x 12" (H)
WEIGHT	33.07 lbs.

GTe Series

M5900Rve

- Long life printhead
- High reliability, low maintenance
- Industry leading throughput
- Heavy-duty industrial construction
- Wide range of interface connectivity options using I/F Plug-In Modules



PRINTING SPEED	up to 6"/s (125 mm/s)
PRINT RESOLUTION	203 dpi (8 dpmm)
PROCESSOR	32-Bit RISC
MAX PRINT AREA	4.4" W x 49.2" L (112 mm x 1249 mm)
DIMENSIONS	10.28" W x 12.67" D x 11.23" H
WEIGHT	22.7 lbs.

M5900Rve

MB Series

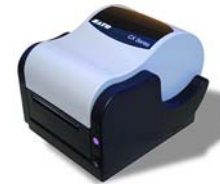
- 802.11b, Bluetooth and RS232 connectivity
- Up to 1.89"/4" wide print
- Rugged design
- Light weight



MB200i	PRINTING SPEED	Up to 4"/s (100 mm/s) at 16% printing coverage
	PRINT RESOLUTION	203 dpi (8 dpmm)
	MAX PRINT AREA	1.89" W x 6.3" L (48 mm x 160 mm)
	DIMENSIONS	3.5" (W) x 5.03" (D) x 2.9" (H)
	WEIGHT	0.9 lbs. (with battery)
MB400	PRINTING SPEED	Up to 2"/s (50 mm/s)
	PRINT RESOLUTION	203 dpi (8 dpmm)
	PROCESSOR	32-Bit RISC
	MAX PRINT AREA	4.1" W x 11.7" L (104 mm x 297 mm)
	DIMENSIONS	7.5" (W) x 3.1" (D) x 5.5" (H)
	WEIGHT	2.1 lbs. (with battery)

CX400

- Compact design
- Economical solution for low volume applications
- Easy loading and maintenance
- Up to 4 ips print speed
- Large media capacity



CX400	PRINTING SPEED	1 - 4"/s (25.4 - 101.6 mm/s)
	PRINT RESOLUTION	203 dpi (8 dpmm)
	PROCESSOR	32-Bit RISC
	MAX PRINT AREA	4.1" W x 50" L (104 mm x 1270 mm)
	DIMENSIONS	7.7" (W) x 10.2" (D) x 6.5" (H)
	WEIGHT	8.1 lbs.

CT400/410

- RISC CPU for outstanding performance
- High print speed
- High print quality and print resolution
- Compact feature-rich design
- Antibacterial plastic enclosure
- Wide range of internal interface connectivity options including Ethernet



CT400/410	PRINTING SPEED	2" - 6"/s (50 - 150 mm/sec) on CT400 2" - 4"/s (50 - 100 mm/sec) on CT410
	PRINT RESOLUTION	203 dpi on CT400 (8 dpmm) 305 dpi on CT410 (12 dpmm)
	PROCESSOR	32-Bit RISC
	MAX PRINT AREA	4.1" W x 15" L (104 mm x 381 mm)
	DIMENSIONS	7.8" (W) x 9" (D) x 7.1" (H)
	WEIGHT	6.6 lbs.

HT200e

- Portable
- Battery operated
- Scanner I/F
- Data manipulation & management

HT200e	PRINTING SPEED	2.4"/s or 3.1"/s (60 mm/s or 80 mm/s)
	PRINT RESOLUTION	203 dpi (8 dpmm)
	MAX PRINT AREA	1.89" W x 3.78" L (48 mm x 96 mm)
	DIMENSIONS	5.2" (W) x 9" (D) x 5.9" (H)
	WEIGHT	5.3 lbs. (with adapter) 5.5 lbs. (with battery)



XL400e/410e

- High performance tag printer
- Cut and stack capability
- Heavy-duty print mechanism
- Automatic calibration for correct print registration



XL400/XL410e	PRINTING SPEED	2" - 8"/s (50 - 200 mm/s) on XL400e 4" - 6"/s (100 - 150 mm/s) on XL410e
	PRINT RESOLUTION	203 dpi on XL400e (8 dpmm) 305 dpi on XL410e (12 dpmm)
	MAX PRINT AREA	4"W x 11.8" L (100 mm x 300 mm) on XL400e 4" W x 9.4" L (100 mm x 240 mm) on XL410e
	DIMENSIONS	19.6" (W) x 11.8" (D) x 11.5" (H)
	WEIGHT	30.9 lbs.