



# COMPACT ECONOMICAL THERMAL SOLUTIONS



## CX Series Printers

The desktop CX thermal printers are ideal for a range of applications, including:

-  **Low Volume**
-  **Manufacturing**
-  **Shipping/Receiving**
-  **Asset Tracking**
-  **Compliance Labeling**
-  **Retail**
-  **Healthcare**

### **Economical Solution**

The CX Series offers a low-cost printing solution for low volume applications. Speed of 4 inches-per-second and feature rich design will satisfy a wide spectrum of requirements.

### **Compact Design**

Designed for convenience, the CX Series offers compact design for real-estate-sensitive applications. It offers many advanced features simplifying loading and operation.

### **Media Capacity**

The CX Series is designed to accommodate a full 5" OD roll of media, reducing downtime and simplifying operation.

Performs best with  
**Techno**   
T H E R M  
Labels & Ribbons



THE BEST PERFORMING  
COMPACT

# SPECIFICATIONS

## CX400



### Out of the box ... and ready to go!

Complete with:

- Labeling Software
- Parallel Printer Cable
- Starter Roll of Media & Ribbon
- Power Supply
- User's & Programmers Guide



#### Memory:

2 MB DRAM  
2 MB Flash ROM  
4 MB or 6 MB Optional Flash

#### Processor:

32-BIT

#### Media:

Roll-fed or fan-fold, die-cut or continuous direct thermal (thermal transfer) labels, synthetics, and tag stock with or without black mark, gap, or notch.

Max. Caliper: 0.0075" (0.254 mm)  
Max. Roll Diameter: 5" (127 mm)  
Wind: Face-Out or Face-In

#### Ribbon:

Max. Roll Diameter: 1.41" (36 mm)  
Min. Core Diameter: 0.5" (12.7 mm)  
Wind: Face-Out

#### Sensing:

Adjustable transmissive sensor for gap.  
Reflective sensor for black mark. Automatic, programmable setting of top of form. Label present sensor - optional with label dispenser. Ribbon-out sensor

#### Interface:

- Serial RS232 (up to 38.4k bps)
- Centronics Parallel

#### Barcode Symbolologies:

**Elementary:** UPC-A, UPC-E, EAN-8, EAN-13, Code 39, Code 93, Code 128, Codabar, MSI, Bookland, Industrial 2/5, Interleaved 2/5, Matrix 2/5, Postnet, UCC/EAN 128  
**2-Dimensional:** PDF417, Maxicode

#### Fonts:

Bitmap - 12 proportional, mono-spaced and outline fonts (Code table 858). Scalable Internal CG Triumvirate® & CG Times® fonts. Optional Downloaded TrueType® fonts, scalable from 8 to 72 points.

#### Barcode & Font Formatting:

360° rotation of barcodes and text, character expansion horizontally and vertically, sequential numbering, form overlay for high-speed editing of complex formats.

#### Graphic Support:

Printing & storage of .PCX, .BMP format, SATO Hex/binary

#### Software:

Windows® Drivers (Windows® 95, 98, ME, NT4.0, 2000, XP)  
"Label Gallery Free" - Label Software  
Printer Utilities

#### Electrical Requirements:

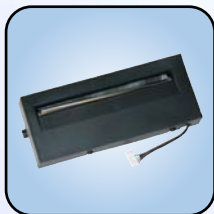
100-120VAC/200-240VAC, 50/60 Hz (± 1%)  
Agency Certifications: CE, UL, CSA, TÜV

#### Environmental Requirements:

Operating: 40° to 100°F (4° to 38°C)  
30-80% RH, non-condensing  
Storage: -4° to 122°F (-20° to 50°C)  
Max. 85% RH, non-condensing  
ESD: 8kV

#### Optional Features:

Label Cutter (factory installed), Label Dispenser (factory installed), 220 V Power Supply, USB, Ethernet, Memory Expansion, Rewinder, Keyboard



Cutter



Label Gallery



Keyboard



Rewinder



### SATO Labeling Solutions America, Inc.

1140 Windham Parkway, Romeoville, IL 60446  
Phone: (630) 771-4200 Fax: (630) 771-4210  
E-mail: [satosales@satolabeling.com](mailto:satosales@satolabeling.com)

[www.satolabeling.com](http://www.satolabeling.com)